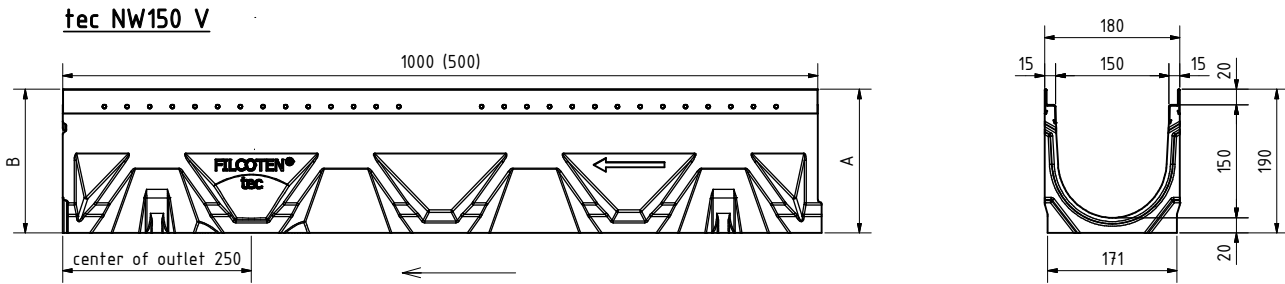




1. Rinne / Channel:



Rinne / channel - Maße / dimensions				
Typ	Höhe A height A	Höhe B height B	Länge length	BG code V
0	190	190	1000	104.15200
0 (0,5m)	190	190	500	104.15250

Legende / explanation:	
V:	verzinkter Stahl (Zarge) / galvanized steel (edge)
E:	Edelstahl / stainless steel
GJS:	Gußisen / ductil iron

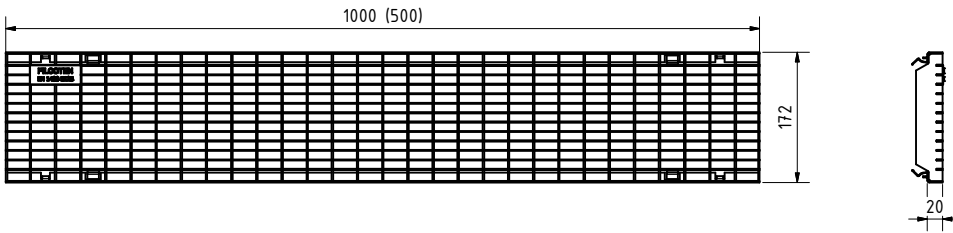
data sheet:

FILCOTEN tec NW150

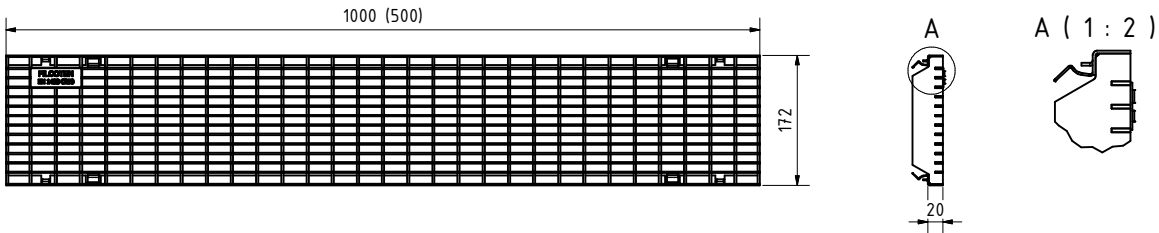


2. Gitterrost / Mesh grating:

B125kN MW30/10: V 17015220 (17015221)

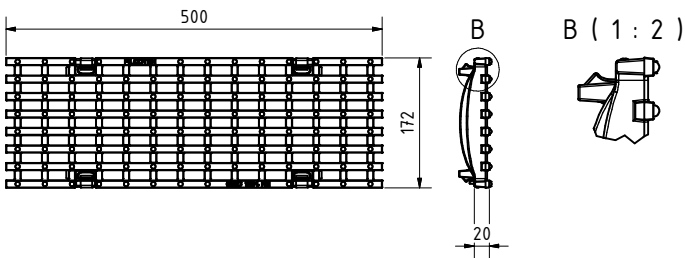


C250kN MW30/10: V 17015222 (17015223)



2. Gußrost / Ductil iron grating:

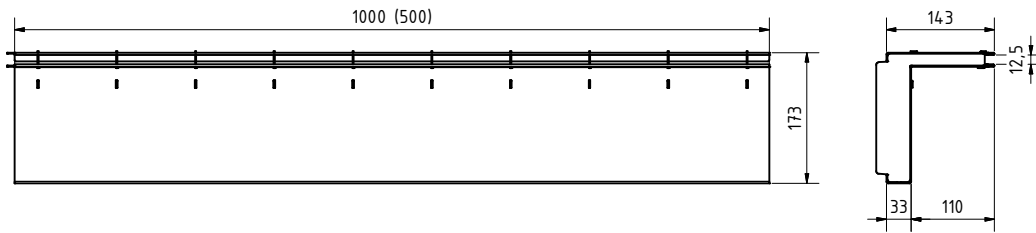
C250kN MW29/13: GJS 17015101



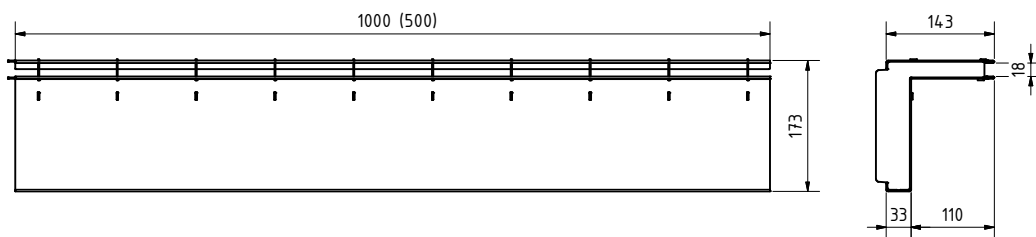


2. Schlitzaufsatz / Slot top:

C250kN SW12,5: V 17115243 (17115244), E 17115343 (17115344)

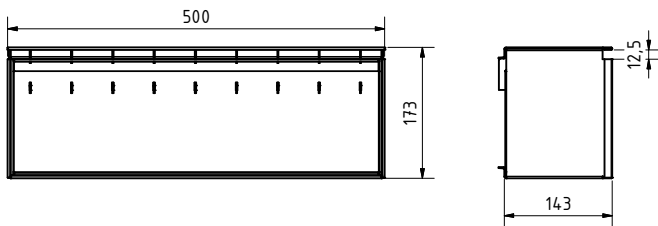


C250kN SW18: V 17115233 (17115234) , E 17115333 (17115334)

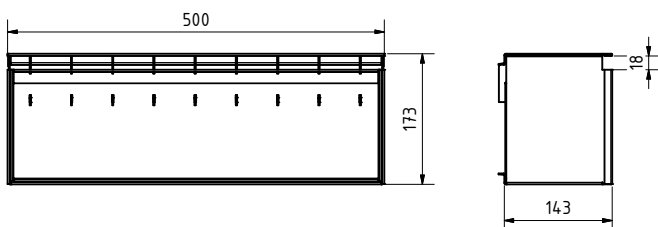


2. Revisionschacht / Maintenance unit:

C250kN SW12,5: V 17115281, E 17115381

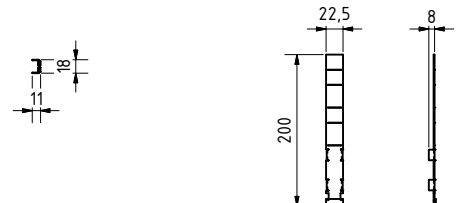
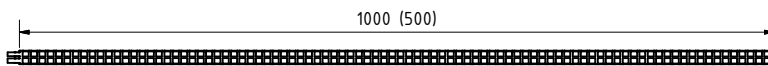


C250kN SW18: V 17115295, E 17115395



2. Schlitzeinlage / Slot inlay square-perf. 8/8:

V 37951 (37950), E 37956 (37955)

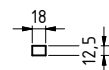
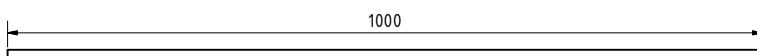


4. Stirnplatte/End cap:

V 17110280, E 17110380

2. Bauzeitabdeckung / Construction time barrier SW 18:

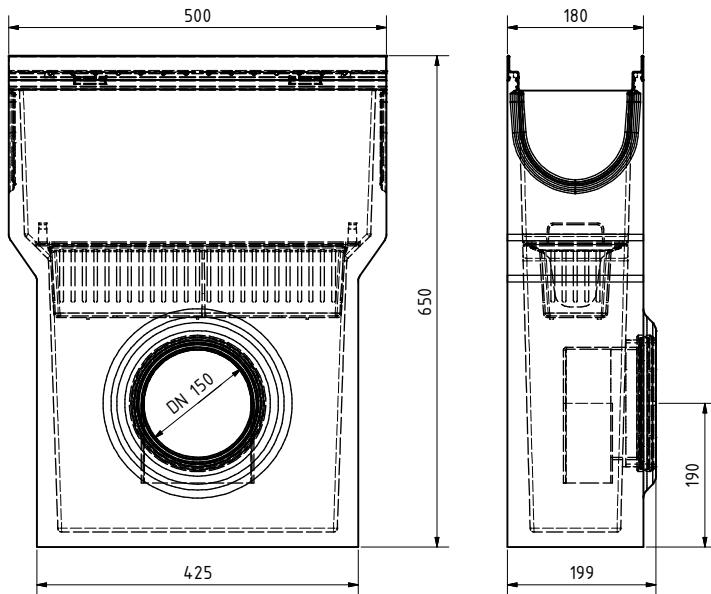
H 37961



3. Sinkkasten / Sump unit:

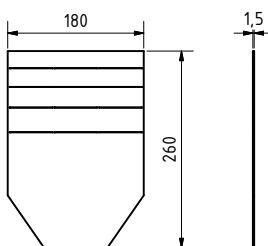
(optional: Geruchsverschluss / Drain trap: 30057
Schlammeimer / Silt bucket: 22516)

V 10415291

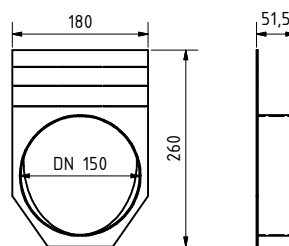


**4. Stirn-/ Endplatte
/ End cap:**

V 19015230



V 19015231



**5. Vandalismus Verriegelung /
Anti-vandalism locking device 32088:**

