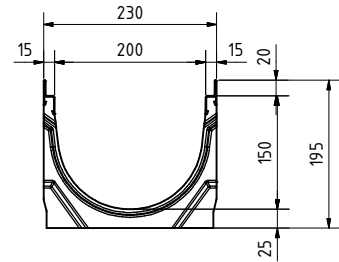
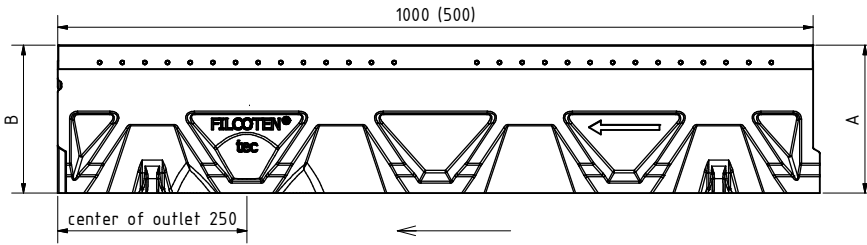




1. Rinne / Channel:

tec NW200 V



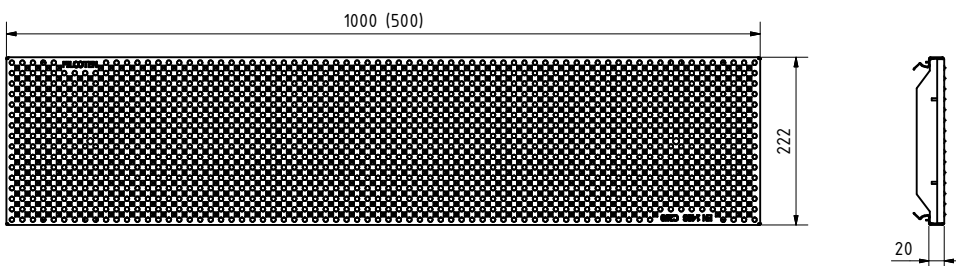
Rinne / channel - Maße / dimensions				
Typ	Höhe A height A	Höhe B height B	Länge length	BG code V
0	195	195	1000	10220200
0 (0,5m)	195	195	500	10220250

Legende / explanation:	
V:	verzinkter Stahl (Zarge) / galvanized steel (edge)
E:	Edelstahl / stainless steel
GJS:	Gußeisen / ductil iron



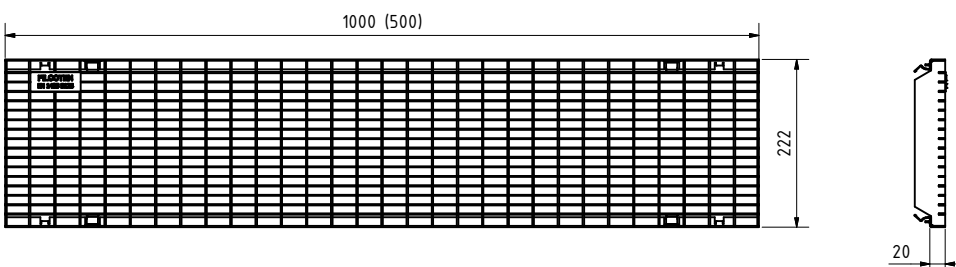
2. Lochrost / Perforated grating:

C250kN d6: V 17020228 (17020229)

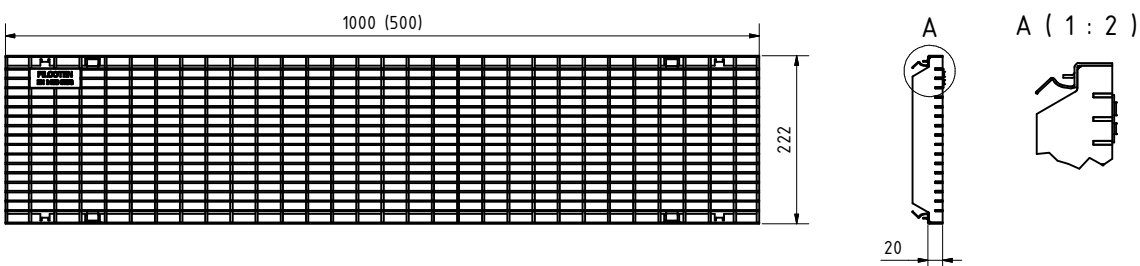


2. Gitterrost / Mesh grating:

B125kN MW30/10: V 17020220 (17020221)

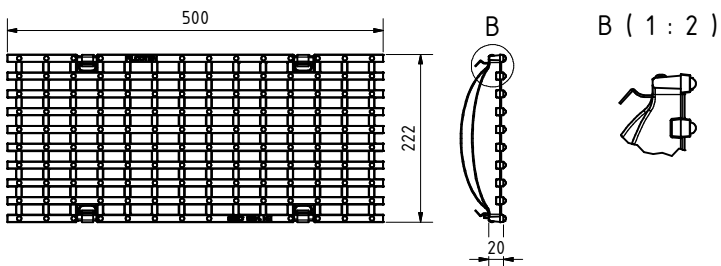


C250kN MW30/10: V 17020222 (17020223)



2. Gußrost / Ductil iron grating:

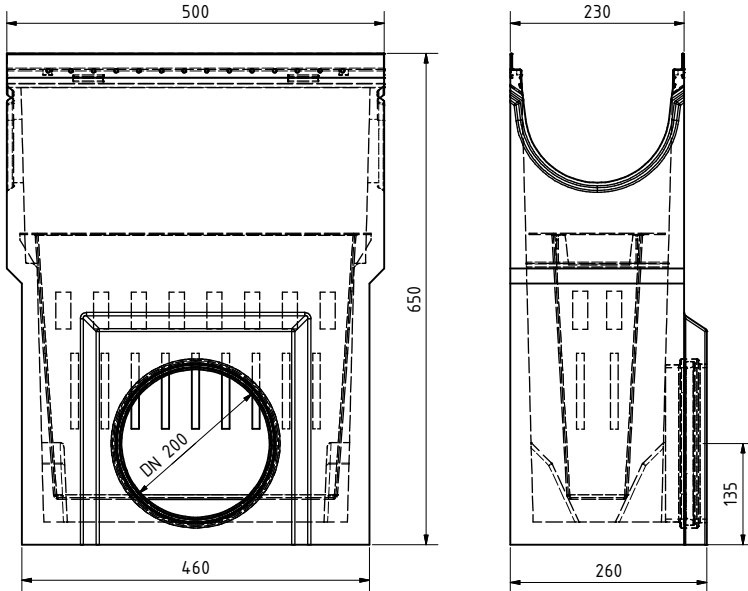
C250kN MW29/13: GJS 17020101



3. Sinkkasten / Sump unit:

(optional: Schlammeimer / Silt bucket: 22512)

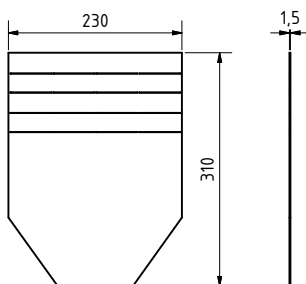
V 10220291



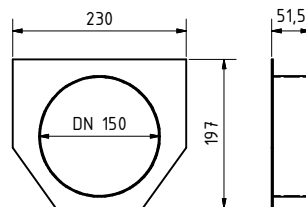
4. Stirn-/ Endplatte

/ End cap:

V 19020230



V 19020232



5. Vandalismus Verriegelung /

Anti-vandalism locking device 32089:

