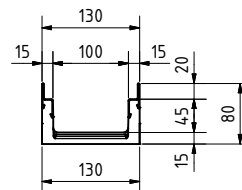
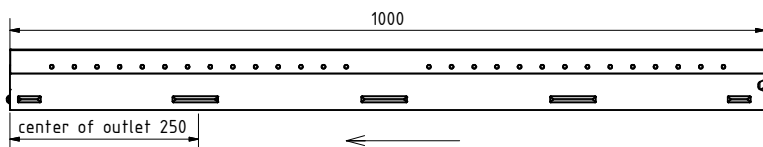


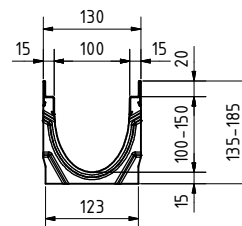
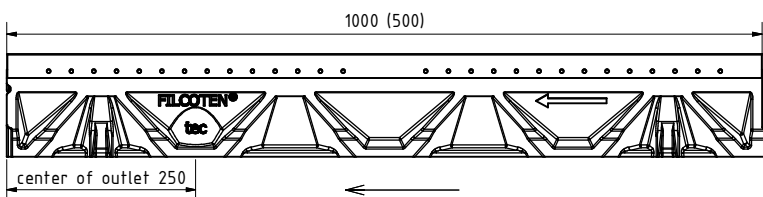


1. Rinne / Channel:

tec NW100 mini 80 V



tec NW100 V

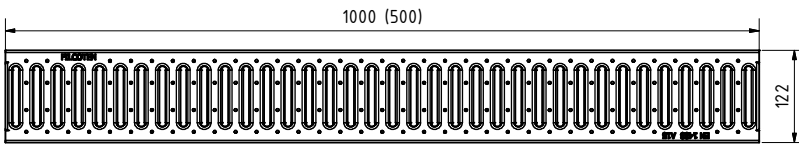


Rinne / channel - Maße / dimensions				
Typ	Höhe A height A	Höhe B height B	Länge length	BG code V
mini 80	80	80	1000	10210201
0	135	135	1000	104.10200
0 (0,5m)	135	135	500	104.10250
1	135	140	1000	104.10201
2	140	145	1000	104.10202
3	145	150	1000	104.10203
4	150	155	1000	104.10204
5	155	160	1000	104.10205
5-0	160	160	1000	104.10261
6	160	165	1000	104.10206
7	165	170	1000	104.10207
8	170	175	1000	104.10208
9	175	180	1000	104.10209
10	180	185	1000	104.10210
10-0	185	185	1000	104.10262

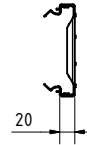
Legende / explanation:	
V:	verzinkter Stahl (Zarge) / galvanized steel (edge)
E:	Edelstahl / stainless steel
GJS:	Guß Eisen / ductil iron
H:	Holz / wood

2. Stegrost / Slotted grating:

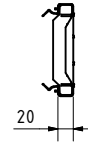
A15kN SW8/80: V 17010202 (17010203) / C250kN SW8/80: 17010206 (17010207)



A15kN:



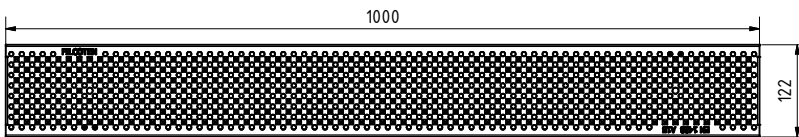
C250kN:



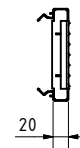
2. Lochrost / Perforated grating:

A15kN d6: V 17010204

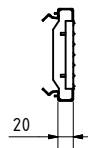
C250kN d6: V 17010228



A15kN:

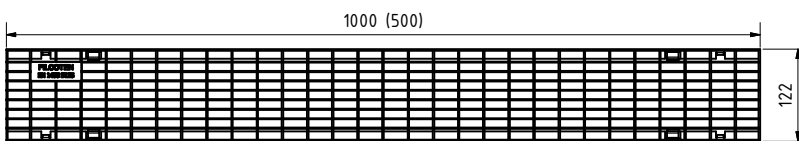


C250kN:

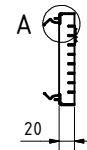


2. Gitterrost / Mesh grating:

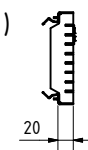
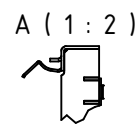
B125kN MW30/10: V 17010220 (17010221) / C250kN MW30/10: V 17010222 (17010223)



B125kN:

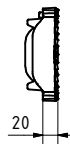
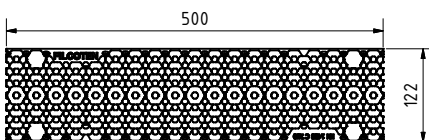


C250kN:



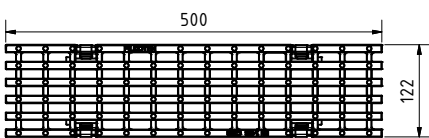
2. Kunststoffrost / Plastic grating "ComBee":

C250kN Ø7,3: PA 17010402



2. Gußrost / Ductil iron grating:

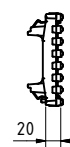
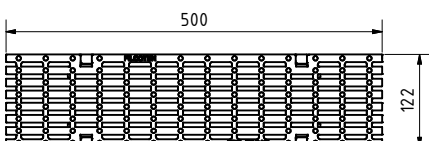
C250kN MW29/13: GJS 17010101



B (1 : 2)



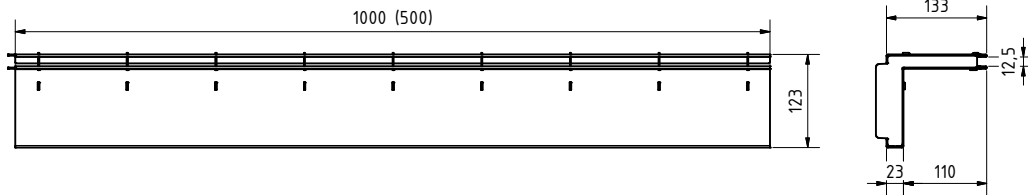
C250kN MW29/6: GJS 17010106



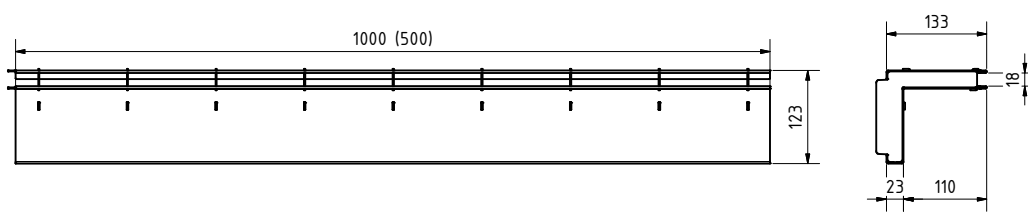


2. Schlitzaufsatz / Slot top:

C250kN SW12,5: V 17110243 (17110244), E 17110343 (17110344)

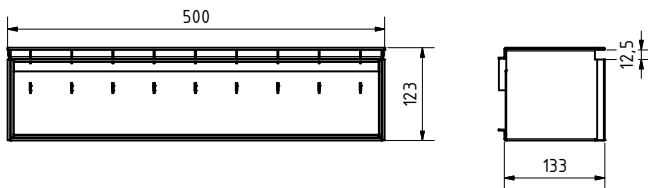


C250kN SW18: V 17110233 (17110234) , E 17110333 (17110334)

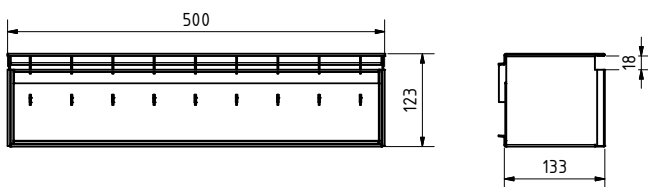


2. Revisionschacht / Maintenance unit:

C250kN SW12,5: V 17110281, E 17110381

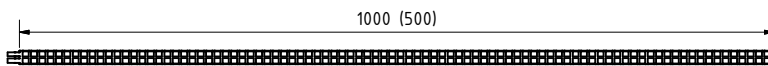


C250kN SW18: V 17110295, E 17110395



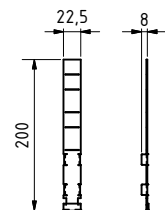
2. Schlitzeinlage / Slot inlay square-perf. 8/8:

V 37951 (37950), E 37956 (37955)



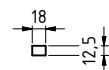
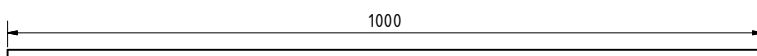
4. Stirnplatte/End cap:

V 17110280, E 17110380



2. Bauzeitabdeckung / Construction time barrier SW 18:

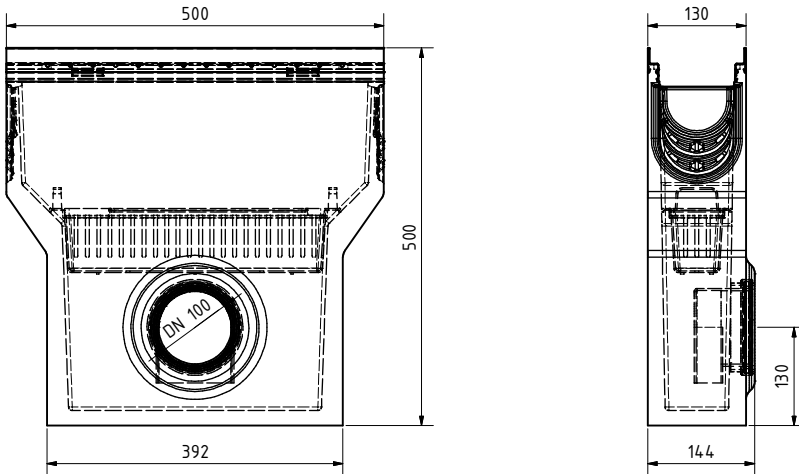
H 37961



3. Sinkkasten / Sump unit:

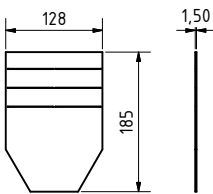
(optional: Geruchsverschluss / Drain trap: 30056
Schlammeimer / Silt bucket: 22515)

V 10410291

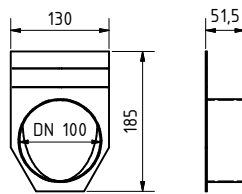


4. Stirn-/ Endplatte / End cap:

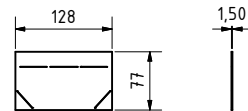
V 19010230



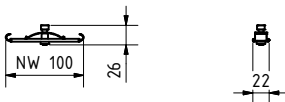
V 19010231



mini: V 19010200



5. Vandalismus Verriegelung / Anti-vandalism locking device 32087:



6. Geruchsverschluss für Bodenablauf / Drain trap for bottom outlet:

PVC 30019

