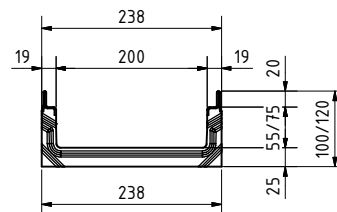
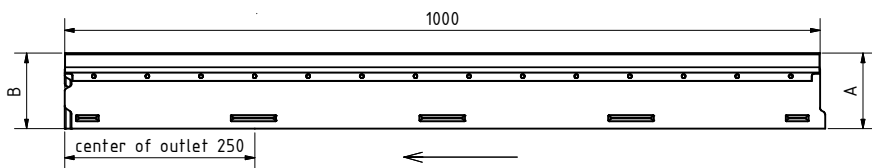


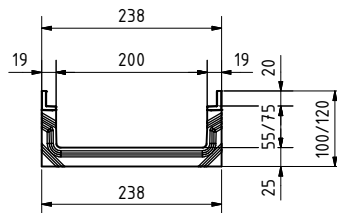
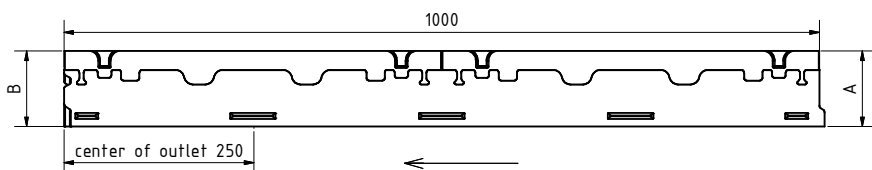


1. Rinne / Channel:

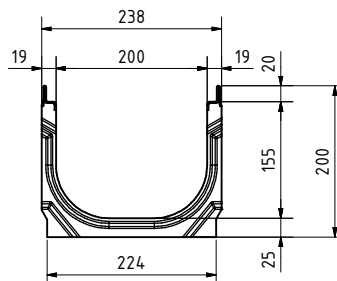
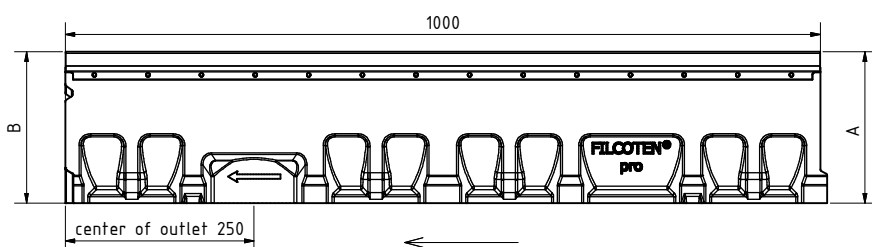
pro NW200 mini 100/120 V-E



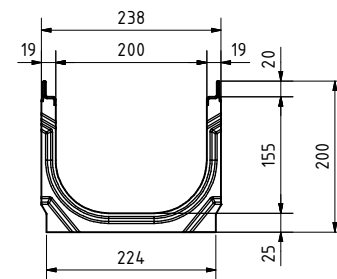
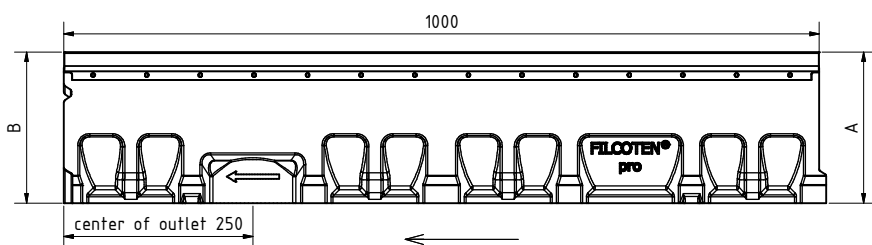
pro NW200 mini 100/120 G



pro NW200 mini 200 V-E



pro NW200 mini 200 G



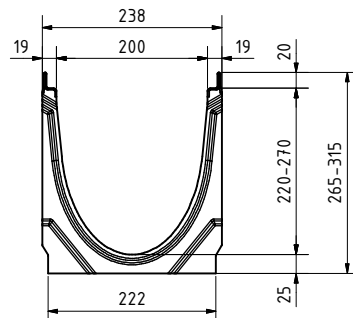
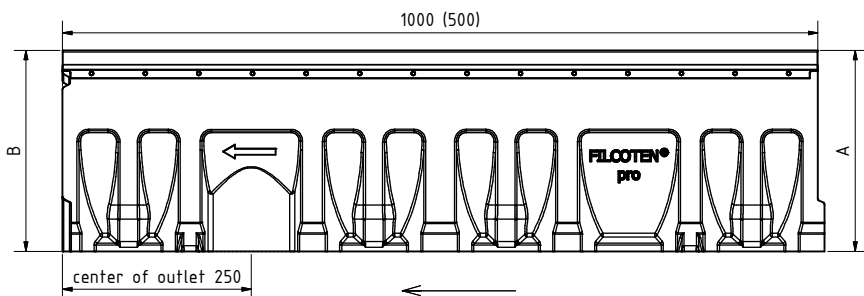
Rinne / channel - Maße / dimensions						
Typ	Höhe A height A	Höhe B height B	Länge length	BG code V	BG code E	BG code G
mini 100	100	100	1000	10520202	10520302	10520102
mini 120	120	120	1000	10520200	10520300	10520100
mini 200	200	200	1000	10520201	10520301	10520101

Legende / explanation:	
V:	verzinkter Stahl (Zarge) / galvanized steel (edge)
E:	Edelstahl (Zarge) / stainless steel (edge)
G:	Gußbeisen-Zarge / cast iron edge
GJS:	Gußbeisen / ductil iron

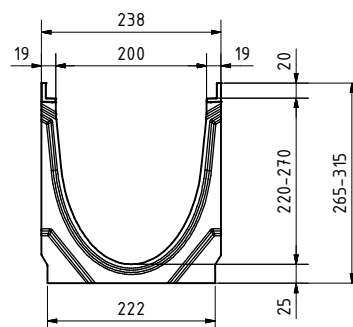
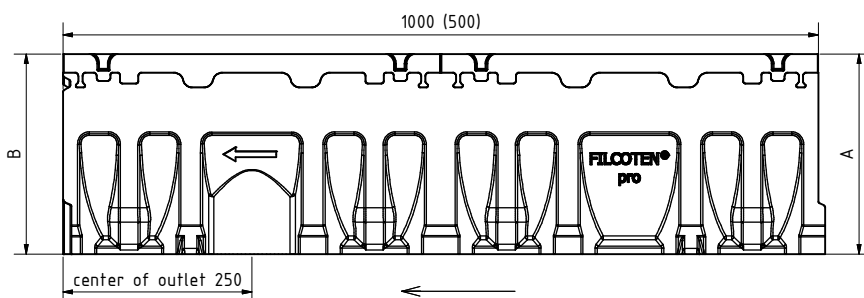


1. Rinne / Channel:

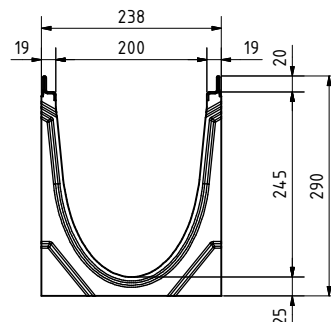
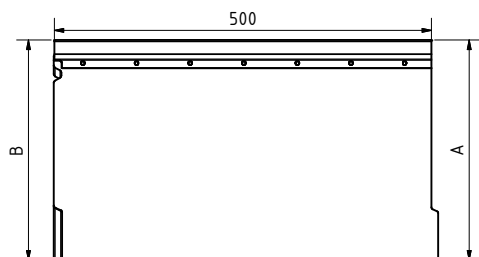
pro NW200 V-E



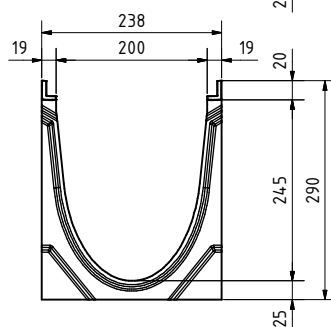
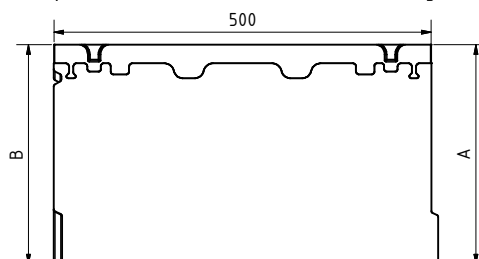
pro NW200 G



pro NW200 V, Nr. 5-0 f. seitt. Bohrung/f. side outlet drilling



pro NW200 G, Nr. 5-0 f. seitt. Bohrung/f. side outlet drilling

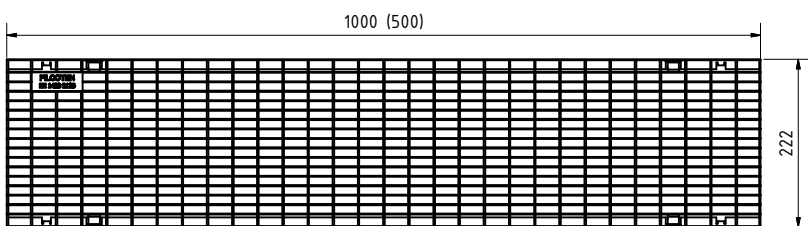


Rinne / channel - Maße / dimensions						
Typ	Höhe A height A	Höhe B height B	Länge length	BG code V	BG code E	BG code G
0	265	265	1000	10620200	10620300	10620100
0 (0,5m)	265	265	500	10620280	10620380	10620180
1	265	270	1000	10620201	10620301	10620101
2	270	275	1000	10620202	10620302	10620102
3	275	280	1000	10620203	10620303	10620103
4	280	285	1000	10620204	10620304	10620104
5	285	290	1000	10620205	10620305	10620105
5-0	290	290	1000	10620261	10620361	10620161
5-0 (0,5m)	290	290	500	10620281	10620381	10620181
6	290	295	1000	10620206	10620306	10620106
7	295	300	1000	10620207	10620307	10620107
8	300	305	1000	10620208	10620308	10620108
9	305	310	1000	10620209	10620309	10620109
10	310	315	1000	10620210	10620310	10620110
10-0	315	315	1000	10620262	10620362	10620162

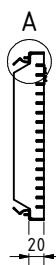
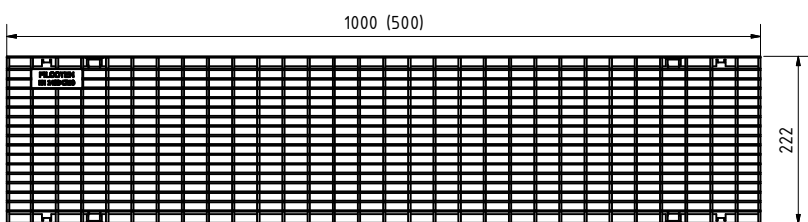


2. Gitterrost / Mesh grating:

B125kN MW30/10: V 17020220 (17020221)



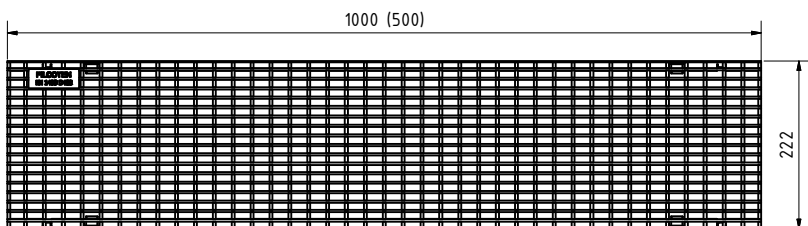
C250kN MW30/10: V 17020222 (17020223), E 17020322 (17020323)



A (1 : 2)

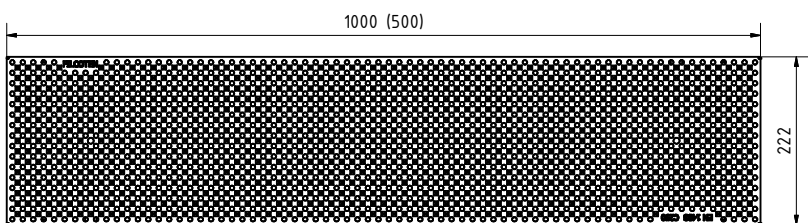


D400kN MW25/10: V 17020226 (17020227), E 17020326 (17020327)



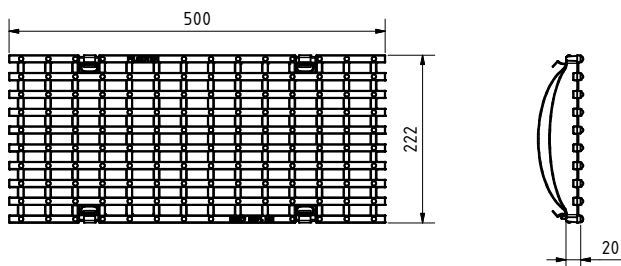
2. Lochrost / Perforated grating:

C250kN d6: V 17020328 (17020329), E 17020228 (17020229)

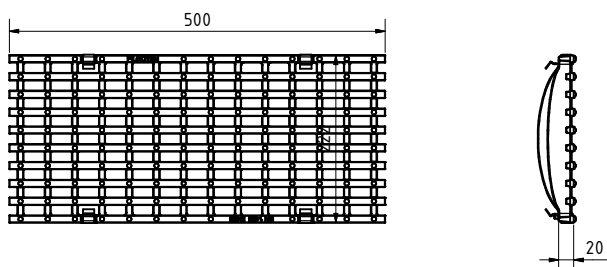


2. Gußrost / Ductil iron grating:

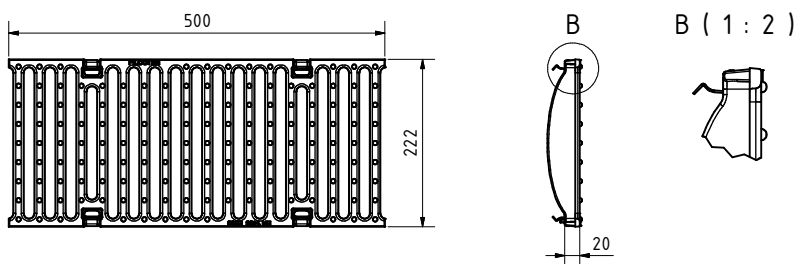
C250kN MW29/13: GJS 17020101



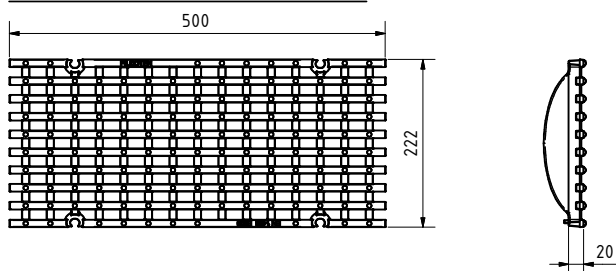
D400kN MW29/13: GJS 17020104



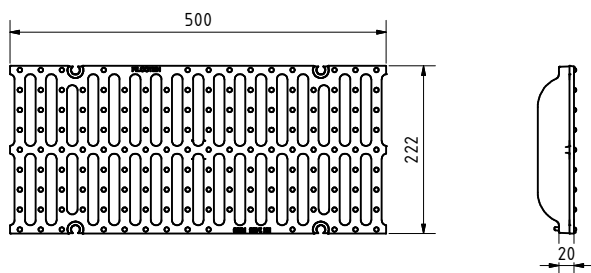
E600kN SW14/200: GJS 17020105



E600kN MW22/13: GJS 17020103

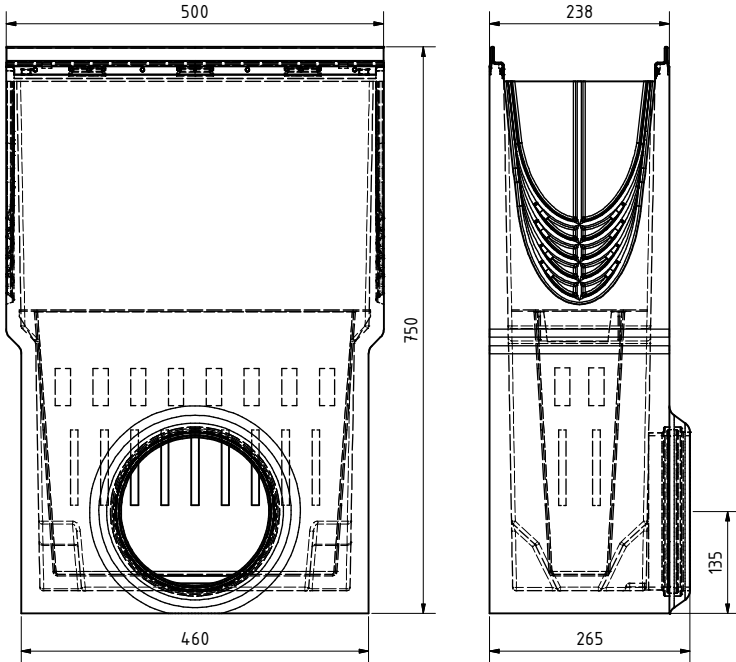


F900kN SW2x14/95: GJS 17020107, 4-fach verschraubbar/4-times bolted

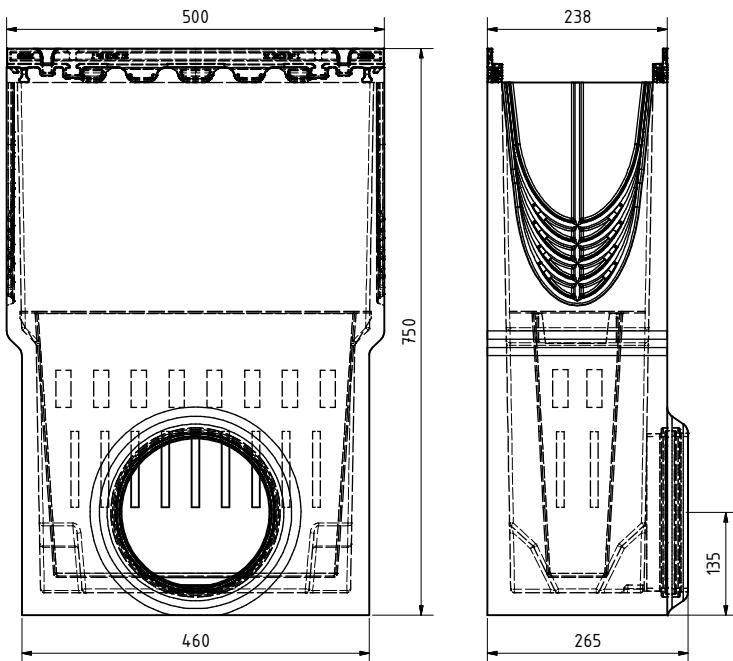


3. Sinkkasten / Sump unit:
(optional: Schlammeimer / Silt bucket: 22512)

V 10620290, E 10620390

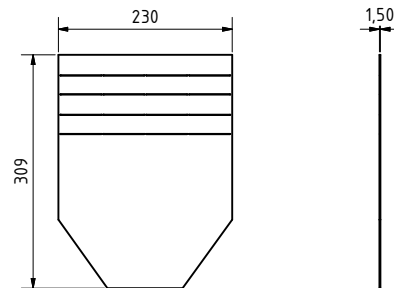


G 10620190

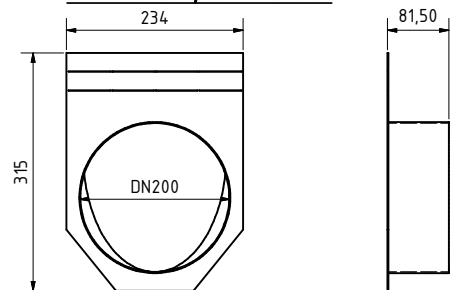


4. Stirn-/ Endplatte
/ End cap:

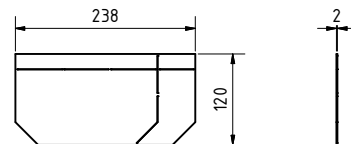
V 19020230, E 19020330



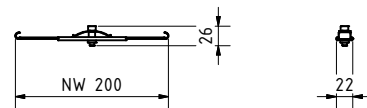
V 19020231, E 19020331



mini: V 19015200, E 19015300



5. Vandalismus Verriegelung /
Anti-vandalism locking device 32089:



6. Verschraubungsmaterial / Bolting material:

V 32103



E 32109:

